

A	B	C	D	E	F	I	R	ΦS	ISO	ΦL	MxV	ISO	ΦL1	MxV	U
158,4	96	73,5	41	37	14	13	11	14,6	F05	50	M6x11	F07	70	M8x12	14

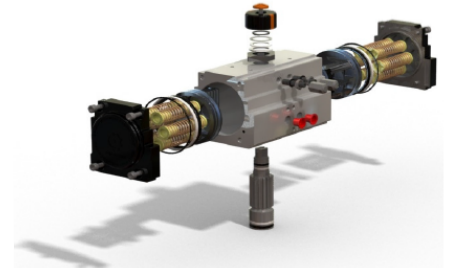
(*)Dimensions in mm

DESIGN STANDARDS

Mounting of solenoid valves	NAMUR Std.	
Mounting of devices	NAMUR VDI	NAMUR VDE 3845 Std.
Coupling according	ISO 5211	DIN 3337
Marking	2GDc Tmax	

TESTS AND CERTIFICATES

Quality Assurance	ISO 9001
-------------------	----------



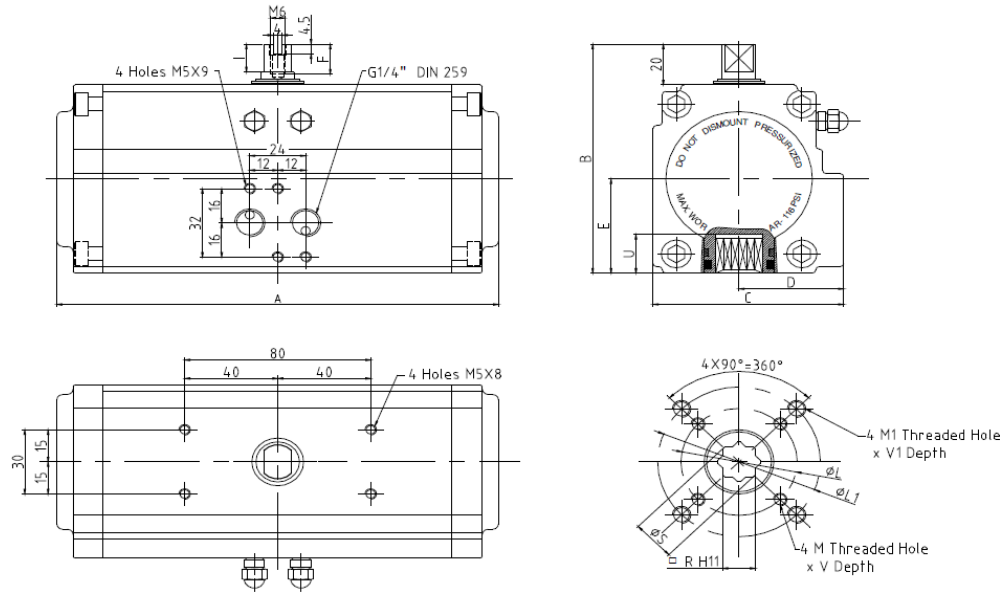
Max. Pressure	Rotation	Screw stroke Adjustment	Chamber Φ(mm)	Air Volume(L)		Operating Temperature (°C) (B)		
				Opening	Closing	STD(standard)	HT(high temp.)	LT(low temp.)
8bar	90±5°	For 1° Need 1/4 Turn	52	0,12	0,16	NBR"O"Ring	FPM"O"Ring	Silicone"O"Ring
						-20°to +80°	-20°to +150°	-40°to +80°

Double Acting Actuator "DA" Torque Output in Nm

Type 20 Pressure	Output Torque For Double Acting in Nm												Weight (kg)								
	2bar		2.5bar		3bar		4bar		4.5bar		5bar			5.5bar		6bar		7bar		8bar	
	0°	90°	0°	90°	0°	90°	0°	90°	0°	90°	0°	90°		0°	90°	0°	90°	0°	90°	0°	90°
D	8		10		12		16		18		20		21,9		23,9		27,9		31,9		1,38

Spring Return Actuator "SR" Torque Output in Nm


Type 20 Pressure	Output Torque For Double Acting in Nm												Spring stroke		Weight (kg)		
	2bar		3bar		4bar		5bar		6bar		7bar		8bar			END	STAR
	0°	90°	0°	90°	0°	90°	0°	90°	0°	90°	0°	90°	0°	90°			
S05	5,7	3,8	7,6	5,7											4,3	6,2	3,54
S06	4,9	2,5	6,9	4,5	10,9	8,5									5	7,4	3,57
S07	4	1,3	6	3,3	9,8	7,3	14	10,4							5,9	8,6	3,6
S08			5,2	2	9,2	6	13,2	9,1	17,2	14,1					6,7	9,9	3,63
S09			4,3	0,8	8,3	4,8	12,3	7,9	16,3	12,8	20,3	16,8			7,6	11,1	3,66
S10					7,4	3,6	11,5	6,7	15,5	11,6	19,5	15,6			8,5	12,4	3,69
S11					6,6	2,3	10,6	5,4	14,6	10,4	18,6	14,3	22,6	18,3	9,3	13,6	3,72
S12							9,7	4,2	13,6	9,1	17,8	12,2	21,8	17,1	10,2	14,8	3,75

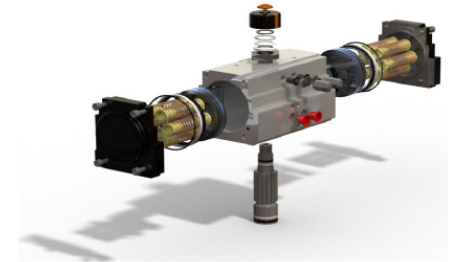


A	B	C	D	E	F	I	R	ΦS	ISO	ΦL	MxV	ISO	ΦL1	MxV	U
190	110	82	45	44	14	13	14	18,6	F05	50	M6x11	F07	70	M8x12	18

(*)Dimensions in mm

DESIGN STANDARDS

Mounting of solenoid valves	NAMUR Std.	
Mounting of devices	NAMUR VDI	NAMUR VDE 3845 Std.
Coupling according	ISO 5211	DIN 3337
Marking	II 2GDc Tmax	
TESTS AND CERTIFICATES		
Quality Assurance	ISO 9001	



Max. Pressure	Rotation		Screw stroke Adjustment	Chamber Φ(mm)	Air Volume(L)		Operating Temperature (°C) (B)		
	0°	90°			Opening	Closing	STD(standard)	HT(high temp.)	LT(low temp.)
8bar	90±5°		For 1 ⁰ Need 1/4 Turn	63	0,21	0,23	NBR"O"Ring -20°to +80°	FPM"O"Ring -20°to +150°	Silicone"O"Ring -40°to +80°

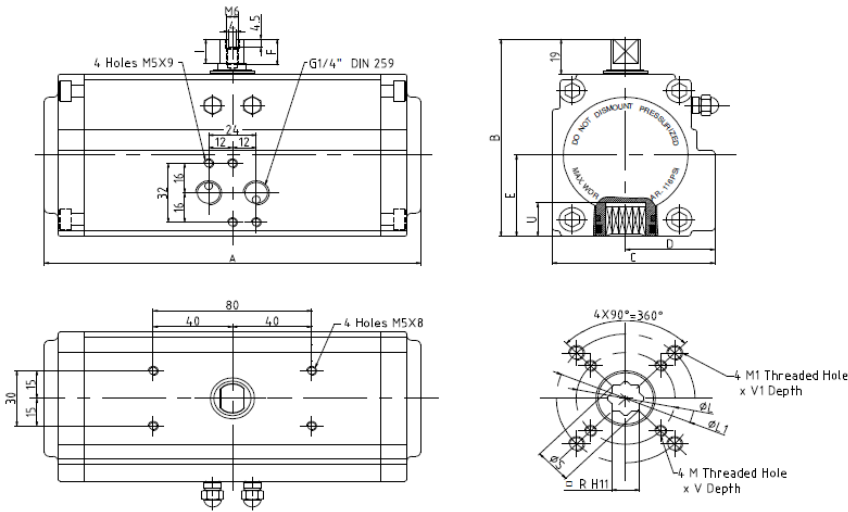
Double Acting Actuator "DA" Torque Output in Nm

Type 35 Pressure	Output Torque For Double Acting in Nm										Weight (kg)					
	2bar	2.5bar	3bar	4bar	4.5bar	5bar	5.5bar	6bar	7bar	8bar						
	0°	90°	0°	90°	0°	90°	0°	90°	0°	90°	0°	90°	0°	90°	0°	90°
D	14,6	18,2	21,9	29,2	32,8	36,5	40,1	43,8	51,1	58,4	2,33					

Spring Return Actuator "SR" Torque Output in Nm

Type 35 Pressure	Output Torque For Double Acting in Nm										Spring stroke		Weight (kg)			
	2bar	3bar	4bar	5bar	6bar	7bar	8bar	END	STAR							
	0°	90°	0°	90°	0°	90°	0°	90°	0°	90°	0°	90°				
S05	11,4	7,7	15	11,4	22,3	14,9			6,8	10,4	2,51					
S06	10,1	5,7	13,6	9,3	20,9	16,6	28,3	23,9	8,2	12,5	2,53					
S07	8,6	3,6	12,5	7,2	19,5	14,5	26,8	21,9	9,6	14,6	2,55					
S08		10,9	5,1	18,2	12,4	25,5	19,8	32,8	27	41,1	32,3	10,9	16,7	2,57		
S09				16,8	10,4	24,1	17,7	31,4	24,9	38,7	32,2	12,3	18,8	2,59		
S10				14	8,2	22,8	15,6	30	22,8	37,3	30,1	44,7	37,4	13,7	20,9	2,61
S11						21,5	13,5	28,7	20,7	36	28	43,3	35,3	15	22,9	2,63
S12						20	11,4	27,3	18,6	34,6	25,9	41,9	33,3	16,4	25	2,65

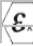
Dimension



A	B	C	D	E	F	I	R	ΦS	ISO	ΦL	MxV	ISO	ΦL1	MxV	U
206	122	97	52	50	14	13	14	18,6	F05	50	M6x11	F07	70	M8x15	18

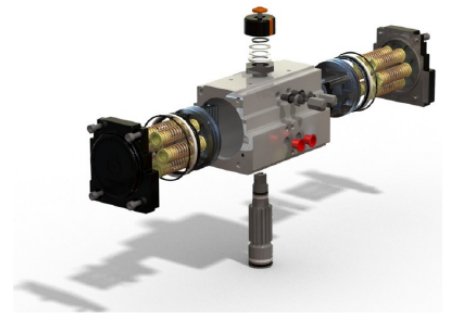
(*)Dimensions in mm

DESIGN STANDARDS

Mounting of solenoid valves	NAMUR Std.	
Mounting of devices	NAMUR VDI	NAMUR VDE 3845 Std.
Coupling according	ISO 5211	DIN 3337
Marking	 I 2GDc Tmax	

TESTS AND CERTIFICATES

Quality Assurance	ISO 9001
-------------------	----------



Max. Pressure	Rotation	Screw stroke Adjustment	Chamber Φ(mm)	Air Volume(L)		Operating Temperature (°C) (B)			
				Opening	Closing	STD(standard)	HT(high temp.)	LT(low temp.)	
8bar	90±5°	For 1 ⁰ Need Turn	1/4	75	0,3	0,34	NBR"O"Ring	FPM"O"Ring	Silicone"O"Ring
							-20°to +80°	-20°to +150°	-40°to +80°

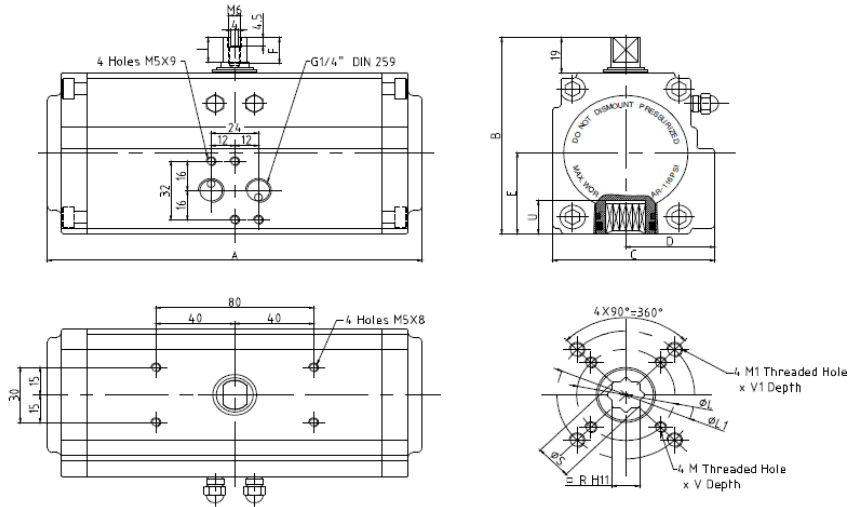
Double Acting Actuator "DA" Torque Output in Nm

Type 50 Pressure	Output Torque For Double Acting in Nm										Weight (kg)										
	2bar		2.5bar		3bar		4bar		4.5bar			5bar		5.5bar		6bar		7bar		8bar	
D	0°	90°	0°	90°	0°	90°	0°	90°	0°	90°	0°	90°	0°	90°	0°	90°	0°	90°	0°	90°	
D	20,1		25,1		30,1		40,1		45,1		50,2		55,2		60,2		70,2		80,3		3,3

Spring Return Actuator "SR" Torque Output in Nm

Type 50 Pressure	Output Torque For Double Acting in Nm										Spring stroke		Weight (kg)				
	2bar		3bar		4bar		5bar		6bar		7bar			8bar		END	STAR
	0°	90°	0°	90°	0°	90°	0°	90°	0°	90°	0°	90°	0°	90°			
S05	14,5	10,6	19,4	15,5	29,5	25,7									10,5	14,5	3,54
S06	12,4	7,6	17,3	12,6	27,4	22,7	37,5	32,8							12,7	17,4	3,57
S07	10,4	4,8	15,2	9,7	25,3	19,9	35,4	29,9							14,8	20,3	3,6
S08			13,1	6,8	23,1	16,9	33,3	27	43,2	37	53,3	47			16,9	23,2	3,63
S09					21	14,1	31,2	24,1	41,1	34,1	51,2	44,2			19	26,1	3,66
S10					19	11,1	28,8	21,2	39	31,2	49,1	41,2	59,1	51,2	21,1	29	3,69
S11							27	18,3	37	28,3	47	38,4	57	48,4	23,2	31,9	3,72
S12							24,9	15,3	34,9	25,4	44,9	35,4	54,9	45,4	25,3	34,7	3,75

Dimension



A	B	C	D	E	F	I	R	ΦS	ISO	ΦL	MxV	ISO	ΦL1	MxV	U
213	131	99,5	52,5	54,5	14	13	17	22,8	F05	50	M6x10	F07	70	M8x15	21

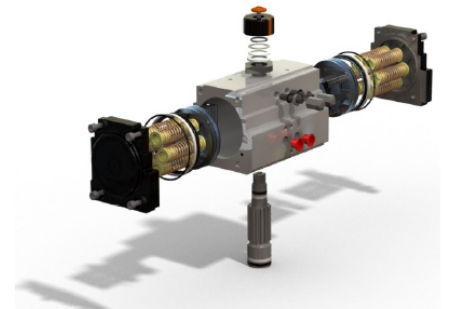
(*)Dimensions in mm

DESIGN STANDARDS

Mounting of solenoid valves	NAMUR Std.	
Mounting of devices	NAMUR VDI	NAMUR VDE 3845 Std.
Coupling according	ISO 5211	DIN 3337
Marking	I 2GDc Tmax	

TESTS AND CERTIFICATES

Quality Assurance	ISO 9001
-------------------	----------



Max. Pressure	Rotation	Screw stroke Adjustment		Chamber Φ(mm)	Air Volume(L)		Operating Temperature (°C) (B)		
		For 1 ⁰ Need Turn	1/4		Opening	Closing	STD(standard)	HT(high temp.)	LT(low temp.)
8bar	90±5°			83	0,43	0,47	NBR"O"Ring -20°to +80°	FPM"O"Ring -20°to +150°	Silicone"O"Ring -40°to +80°

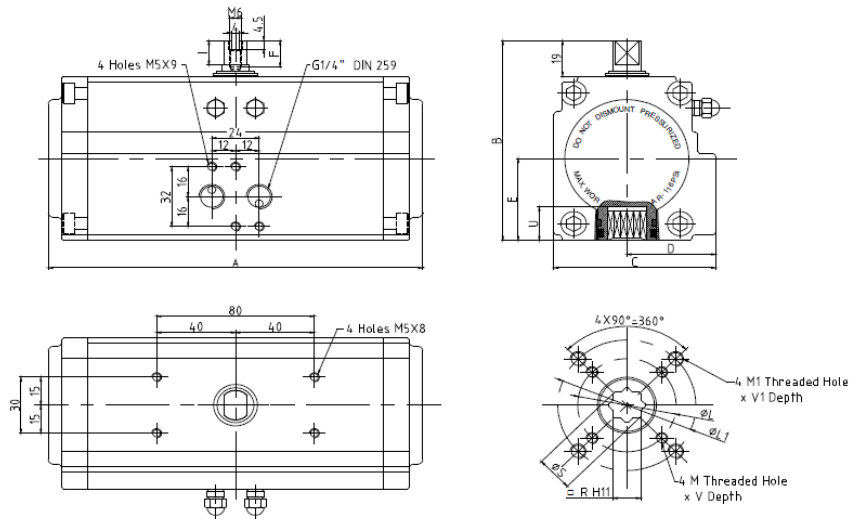
Double Acting Actuator "DA" Torque Output in Nm

Type 75 Pressure	Output Torque For Double Acting in Nm												Weight (kg)								
	2bar		2.5bar		3bar		4bar		4.5bar		5bar			5.5bar		6bar		7bar		8bar	
	0°	90°	0°	90°	0°	90°	0°	90°	0°	90°	0°	90°		0°	90°	0°	90°	0°	90°	0°	90°
D	31,4		39,2		47		62,7		70,5		78,4		86,2		94,1		109,7		125,4		3,67

Spring Return Actuator "SR" Torque Output in Nm

Type 75 Pressure	Output Torque For Double Acting in Nm												Spring stroke		Weight (kg)		
	2bar		3bar		4bar		5bar		6bar		7bar		8bar			END	STAR
	0°	90°	0°	90°	0°	90°	0°	90°	0°	90°	0°	90°	0°	90°			
S05	23,3	16,1	31,1	24	46,8	39,7									15,8	23	3,92
S06	20,1	11,5	28	19,3	43,7	35,1	59,4	50,7							19	27,6	3,96
S07	17	6,9	24,8	14,8	40,5	30,5	56,2	46,2							22,1	32,2	4
S08			21,7	10,1	37,4	25,8	53,1	41,5	68,8	57,2	84,5	72,9			25,3	36,8	4,04
S09					34,2	21,3	49,9	37	65,6	52,6	81,2	68,3			28,5	41,4	4,08
S10					31	16,6	46,7	32,3	62,4	48	78,1	63,7	93,8	79,3	31,6	46	4,12
S11							43,6	27,7	59,3	43,4	75	59,1	90,6	74,8	34,8	50,6	4,16
S12							40,4	23,2	56,1	38,9	71,7	54,5	87,4	70,2	38	55,2	4,2

Dimension



A	B	C	D	E	F	I	R	ΦS	ISO	ΦL	MxV	ISO	ΦL1	MxV	U
259	143,5	109,5	57,5	60	14	13	17	22,8	F05	50	M6x11	F07	70	M8x15	21

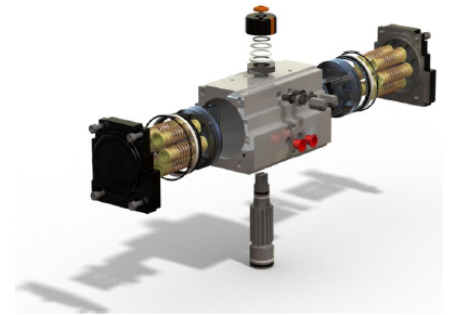
(*)Dimensions in mm

DESIGN STANDARDS

Mounting of solenoid valves	NAMUR Std.	
Mounting of devices	NAMUR VDI	NAMUR VDE 3845 Std.
Coupling according	ISO 5211	DIN 3337
Marking	⊗ I 2GDc Tmax	

TESTS AND CERTIFICATES

Quality Assurance	ISO 9001
-------------------	----------



Max. Pressure	Rotation	Screw stroke Adjustment	Chamber Φ(mm)	Air Volume(L)		Operating Temperature (°C) (B)		
				Opening	Closing	STD(standard)	HT(high temp.)	LT(low temp.)
8bar	90±5°	For 1 ⁰ Need Turn 1/4	92	0,64	0,73	NBR"O"Ring -20°to +80°	FPM"O"Ring -20°to +150°	Silicone"O"Ring -40°to +80°

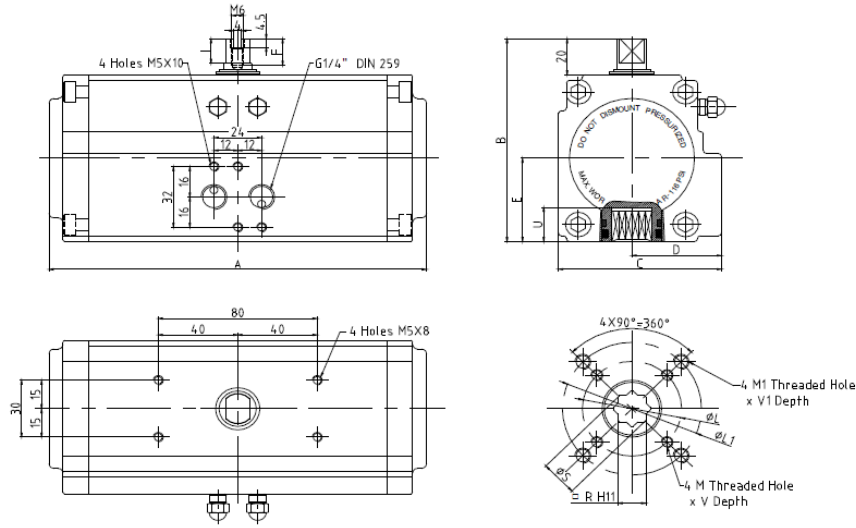
Double Acting Actuator "DA" Torque Output in Nm

Type 110 Output Torque For Double Acting in Nm												Weight (kg)
Pressure	2bar	2.5bar	3bar	4bar	4.5bar	5bar	5.5bar	6bar	7bar	8bar		
	0° 90°	0° 90°	0° 90°	0° 90°	0° 90°	0° 90°	0° 90°	0° 90°	0° 90°	0° 90°		
D	45,1	56,4	67,7	90,3	101,6	112,9	124,1	135,4	158	180,6	5,6	

Spring Return Actuator "SR" Torque Output in Nm

Type 110 Output Torque For Double Acting in Nm												Spring stroke		Weight (kg)			
Pressure	2bar	3bar	4bar	5bar	6bar	7bar	8bar										
	0° 90°	0° 90°	0° 90°	0° 90°	0° 90°	0° 90°	0° 90°	0° 90°	END	STAR							
S05	33,1	22	44,2	33,2	66,8	55,9			23,3	34,4	5,98						
S06	28,4	15,2	39,6	26,4	62,2	49,1	84,8	71,6	28	41,2	6,04						
S07	23,8	8,2	34,9	19,4	57,5	35,2	80,2	64,7	32,7	48,1	6,1						
S08			31,3	12,6	52,9	28,4	75,5	57,9	98,1	80,5	121	103	37,3	55	6,16		
S09					48,2	21,5	70,9	51	93,5	73,6	116	96,1	42	61,9	6,22		
S10					43,6	11,1	66,2	44,1	88,8	66,7	111,3	89,2	134	111,8	46,7	68,7	6,28
S11							61,5	37,2	84,1	59,9	106,6	82,4	129,2	105	51,4	75,6	6,34
S12							56,8	30,4	79,4	53	101,9	75,5	124,5	98,1	56	82,5	6,4

Dimension



A	B	C	D	E	F	I	R	ΦS	ISO	ΦL	MxV	ISO	ΦL1	MxV	U
287	156,5	122,5	64	66,5	14	13	22	29,1	F07	70	M8x13	F10	102	M10x18	26

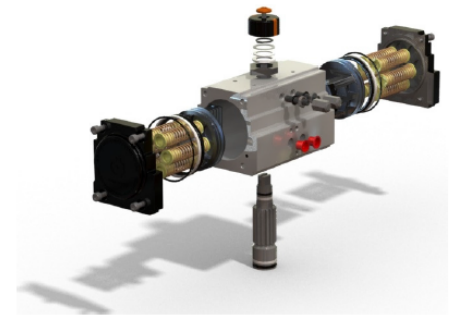
(*)Dimensions in mm

DESIGN STANDARDS

Mounting of solenoid valves	NAMUR Std.	
Mounting of devices	NAMUR VDI	NAMUR VDE 3845 Std.
Coupling according	ISO 5211	DIN 3337
Marking	I 2GDc Tmax	

TESTS AND CERTIFICATES

Quality Assurance	ISO 9001
-------------------	----------



Max. Pressure	Rotation	Screw stroke		Chamber Φ(mm)	Air Volume(L)		Operating Temperature (°C) (B)		
		Adjustment	Turn		Opening	Closing	STD(standard)	HT(high temp.)	LT(low temp.)
8bar	90±5°	For 1 ⁰ Need Turn	1/4	105	0,95	0,88	NBR"O"Ring	FPM"O"Ring	Silicone"O"Ring
							-20°to +80°	-20°to +150°	-40°to +80°

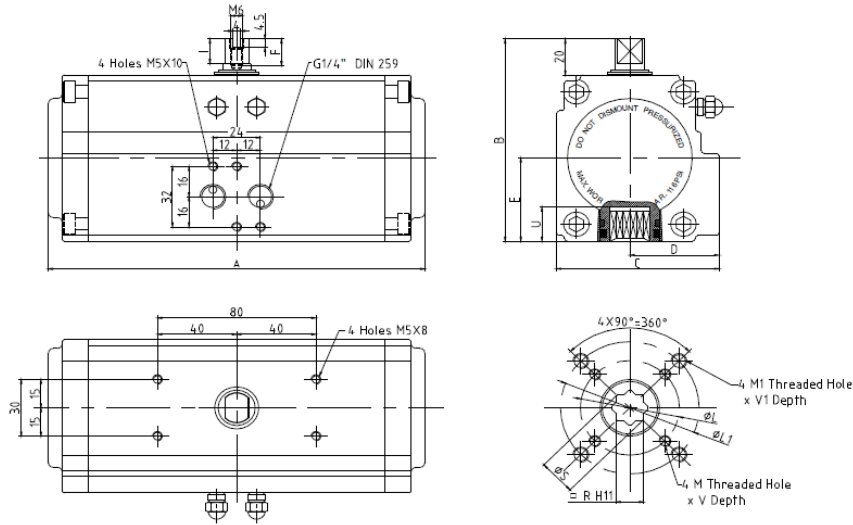
Double Acting Actuator "DA" Torque Output in Nm

Type 160	Output Torque For Double Acting in Nm											Weight (kg)									
Pressure	2bar		2.5bar		3bar		4bar		4.5bar		5bar		5.5bar		6bar		7bar		8bar		
	0°	90°	0°	90°	0°	90°	0°	90°	0°	90°	0°	90°	0°	90°	0°	90°	0°	90°	0°	90°	
D	66,1		82,7		99,2		132,2		148,8		165,3		181,1		198,4		231,4		264,5		6,65

Spring Return Actuator "SR" Torque Output in Nm

Type 160	Output Torque For Double Acting in Nm											Spring stroke		Weight (kg)			
Pressure	2bar		3bar		4bar		5bar		6bar		7bar		8bar		END	STAR	
	0°	90°	0°	90°	0°	90°	0°	90°	0°	90°	0°	90°	0°	90°			
S05	51	33,4	67,5	49,9	101	83									31,6	49,2	7,09
S06	44,7	23,5	61,1	40	94,2	73,2	127	106,2							38	59,1	7,18
S07	38,4	13,7	54,9	30,3	87,9	63,4	121	96,4							44,3	68,9	7,27
S08			48,5	20,4	81,6	53,5	114,7	86,5	147,7	119,6	180,8	152,7			50,6	78,7	7,35
S09					75,3	43,7	108,4	76,8	141,5	109,8	174,5	142,9			56,9	88,6	7,4
S10					68,9	33,4	102	66,5	135,1	99,6	168,2	132,6	201,2	165,7	63,3	98,4	7,5
S11							95,7	57	128,7	90,1	161,8	123,1	194,8	156,2	69,6	108,3	7,61
S12							89,4	47,5	122,5	80,6	155,5	113,6	188,6	146,7	75,9	118,1	7,7

Dimension



A	B	C	D	E	F	I	R	ΦS	ISO	ΦL	MxV	ISO	ΦL1	MxV	U
340	179	138,5	70	77,5	14	12	22	29,1	F07	70	M8x13	F10	102	M10x18	28

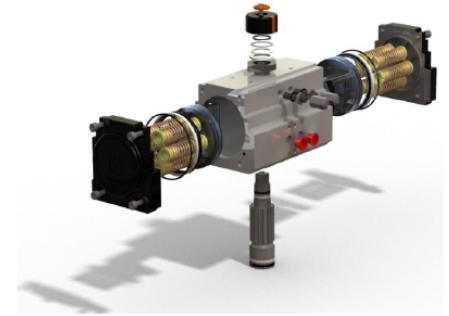
(*)Dimensions in mm

DESIGN STANDARDS

Mounting of solenoid valves	NAMUR Std.	
Mounting of devices	NAMUR VDI	NAMUR VDE 3845 Std.
Coupling according	ISO 5211	DIN 3337
Marking	I 2GDc Tmax	

TESTS AND CERTIFICATES

Quality Assurance	ISO 9001
-------------------	----------



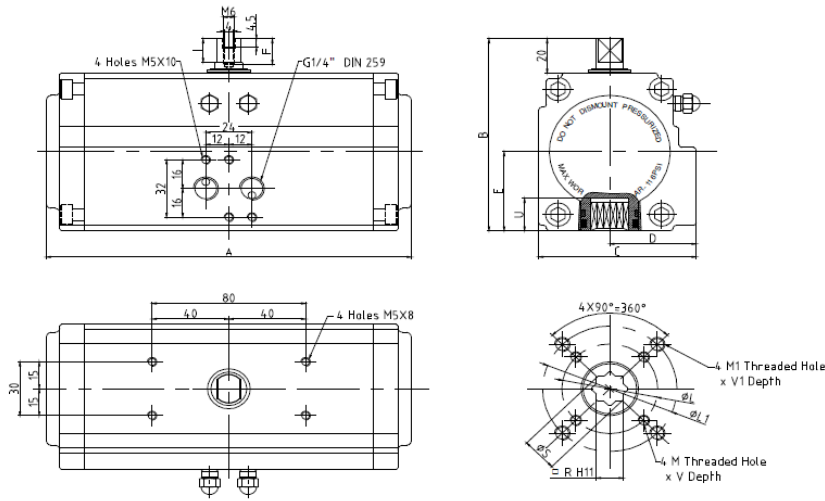
Max. Pressure	Rotation	Screw stroke Adjustment	Chamber Φ(mm)	Air Volume(L)		Operating Temperature (°C) (B)		
				Opening	Closing	STD(standard)	HT(high temp.)	LT(low temp.)
8bar	90±5°	For 1 ⁰ Need Turn	125	1,6	1,4	NBR"O"Ring	FPM"O"Ring	Silicone"O"Ring
						-20°to +80°	-20°to +150°	-40°to +80°

Double Acting Actuator "DA" Torque Output in Nm

Type 255	Output Torque For Double Acting in Nm											Weight (kg)									
Pressure	2bar		2.5bar		3bar		4bar		4.5bar		5bar		5.5bar		6bar		7bar		8bar		
	0°	90°	0°	90°	0°	90°	0°	90°	0°	90°	0°	90°	0°	90°	0°	90°	0°	90°	0°	90°	
D	100,3		125,4		150,5		200,6		225,7		250,8		275,9		301		351,1		401,3		10,43

Spring Return Actuator "SR" Torque Output in Nm

Type 255	Output Torque For Double Acting in Nm												Spring stroke		Weight (kg)		
Pressure	2bar		3bar		4bar		5bar		6bar		7bar		8bar			END	STAR
	0°	90°	0°	90°	0°	90°	0°	90°	0°	90°	0°	90°	0°	90°			
S05	73	47	98	72	148	122									52	79	11,08
S06	63	31	88	56	138	107	188	157							63	94	11,24
S07	52	15	77	40	127	90	178	141							73	110	11,4
S08			67	25	117	75	167	125	217	176	268	226			84	125	11,56
S09					107	59	157	109	207	159	257	210			94	141	11,72
S10					96	44	146	94	196	144	247	194	297	245	105	157	11,88
S11							136	78	186	128	236	178	286	228	115	173	12,04



A	B	C	D	E	F	I	R	ΦS	ISO	ΦL	MxV	ISO	ΦL1	MxV	U
414	195	153	77	85,8	14	12,5	27	36,8	F10	102	M10x18	F12	125	M12x21	33

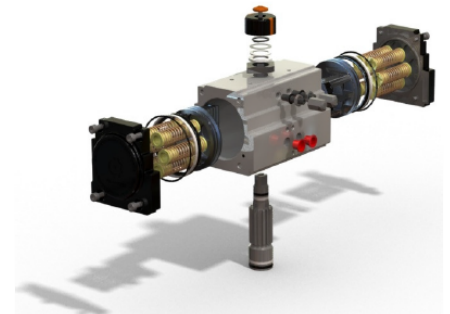
(*)Dimensions in mm

DESIGN STANDARDS

Mounting of solenoid valves	NAMUR Std.	
Mounting of devices	NAMUR VDI	NAMUR VDE 3845 Std.
Coupling according	ISO 5211	DIN 3337
Marking	I 2GDc Tmax	

TESTS AND CERTIFICATES

Quality Assurance	ISO 9001
-------------------	----------



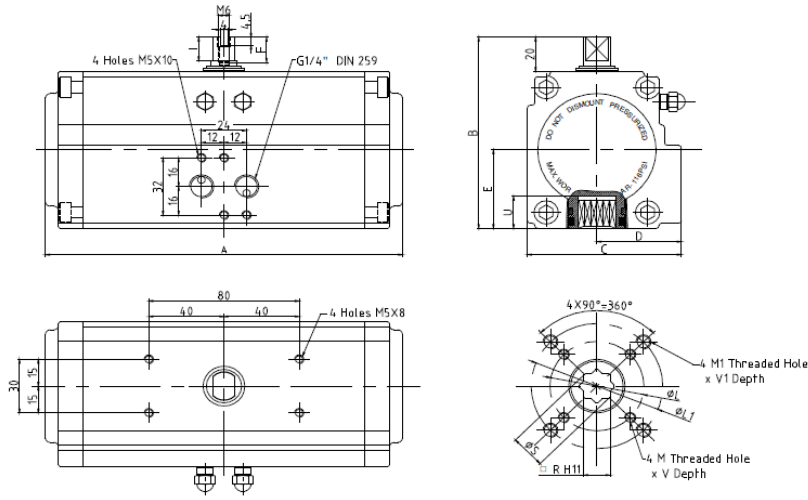
Max. Pressure	Rotation	Screw stroke Adjustment	Chamber Φ(mm)	Air Volume(L)		Operating Temperature (°C) (B)		
				Opening	Closing	STD(standard)	HT(high temp.)	LT(low temp.)
8bar	90±5°	For 1 ⁰ Need Turn	140	2,5	2,2	NBR"O"Ring -20°to +80°	FPM"O"Ring -20°to +150°	Silicone"O"Ring -40°to +80°

Double Acting Actuator "DA" Torque Output in Nm

Type 50	Output Torque For Double Acting in Nm											Weight (kg)									
Pressure	2bar		2.5bar		3bar		4bar		4.5bar		5bar		5.5bar		6bar		7bar		8bar		
	0°	90°	0°	90°	0°	90°	0°	90°	0°	90°	0°	90°	0°	90°	0°	90°	0°	90°	0°	90°	
D	171		213,8		256,5		342		384,8		427,5		470,3		513		598,5		684		15,2

Spring Return Actuator "SR" Torque Output in Nm

Type 50	Output Torque For Double Acting in Nm												Spring stroke		Weight (kg)		
Pressure	2bar		3bar		4bar		5bar		6bar		7bar		8bar			END	STAR
	0°	90°	0°	90°	0°	90°	0°	90°	0°	90°	0°	90°	0°	90°			
S05	128	85	171	127	256	213									86	129	16,25
S06	111	59	154	102	239	187	325	273							103	155	16,5
S07	94	33	137	76	222	162	308	247							120	181	16,75
S08			120	50	205	136	291	221	376	307	462	392			137	206	17
S09					187	110	273	196	358	281	444	367			155	232	17,25
S10					170	84	256	169	341	255	427	340	512	426	172	258	17,5
S11							238	143	324	229	409	314	459	400	189	284	17,75
S12							221	118	307	203	392	289	478	374	206	310	18



A	B	C	D	E	F	I	R	ΦS	ISO	ΦL	MxV	ISO	ΦL1	MxV	U
476	221	175	87,5	98,5	14	12	27	36,8	F10	102	M10x18	F12	125	M12x21	34

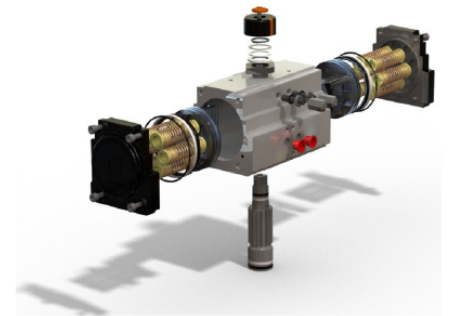
(*)Dimensions in mm

DESIGN STANDARDS

Mounting of solenoid valves	NAMUR Std.	
Mounting of devices	NAMUR VDI	NAMUR VDE 3845 Std.
Coupling according	ISO 5211	DIN 3337
Marking	⊗ ϵ_x 2GDc Tmax	

TESTS AND CERTIFICATES

Quality Assurance	ISO 9001
-------------------	----------



Max. Pressure	Rotation	Screw stroke Adjustment	Chamber Φ(mm)	Air Volume(L)		Operating Temperature (°C) (B)		
				Opening	Closing	STD(standard)	HT(high temp.)	LT(low temp.)
8bar	90±5°	For 1 ⁰ Need Turn	160	3,7	3,2	NBR"O"Ring -20°to +80°	FPM"O"Ring -20°to +150°	Silicone"O"Ring -40°to +80°

Double Acting Actuator "DA" Torque Output in Nm

Type 50 Pressure	Output Torque For Double Acting in Nm										Weight (kg)										
	2bar		2.5bar		3bar		4bar		4.5bar			5bar		5.5bar		6bar		7bar		8bar	
	0°	90°	0°	90°	0°	90°	0°	90°	0°	90°	0°	90°	0°	90°	0°	90°	0°	90°	0°	90°	
D	266		332,5		399		532		598,5		665		731		798		931		1064		22

Spring Return Actuator "SR" Torque Output in Nm

Type 50 Pressure	Output Torque For Double Acting in Nm										Spring stroke		Weight (kg)				
	2.5bar		3bar		4bar		5bar		6bar		7bar			8bar		END	STAR
	0°	90°	0°	90°	0°	90°	0°	90°	0°	90°	0°	90°	0°	90°			
S05	193	124	259	191	392	324									140	208	23,84
S06	165	83	232	149	365	282	498	415							168	250	24,22
S07	137	41	203	107	336	240	469	373							196	292	24,6
S08			176	66	309	199	442	237	575	465	708	598			223	333	24,98
S09					280	157	413	290	546	423	679	556			251	375	25,36
S10					253	115	386	248	519	381	652	514	785	647	279	417	25,74
S11							358	207	491	340	624	437	757	606	307	458	26,12
S12							330	165	463	298	596	431	729	564	335	500	26,5

